

# Bell Hydromatics

## Reducing Modular Valves



### Features

- This valve is employed to keep the pressure of some circuit lower than the main circuit pressure.
- Drain port should be connected to tank.
- Pressure difference between primary pressure and secondary pressure should be maintained over then 10 bar for good pressure reduction.
- Pressure cannot be adjusted if a certain flow rate cannot be obtained.
- The pressure will be increased when the pressure adjustment handle is turned clockwise, and will be reduced when the pressure adjustment handle is turned counter-clockwise.
- Be sure to re-tighten the lock nut firmly after making adjustment to the pressure.

# Ratings

<b>Model</b>	<b>Max operating Pres bar(PSI)</b>	<b>Max Flow lpm(USgpm)</b>	<b>Valve Size</b>	<b>Weight kg(lb)</b>
MR* -01- *	250(3600)	50(13.2)	1/8"	1.1(2.4)
MR* -03- *	250(3600)	100(26.5)	3/8"	3.8(8.3)
MR* -04- *	250(3600)	190(50.2)	1/2"	7.0(15.4)
MR* -06- *	250(3600)	300(79.3)	3/4"	11.2(24.6)

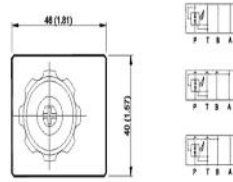
<b>Model &amp; Symbol</b>	<b>Model &amp; Symbol</b>
MRP-01(03)	MRP-04(06)
MRA-01(03)	MRA-04(06)
MRB-01(03)	MRB-04(06)

# MR\* -01 Reducing Valves (Modular Type)

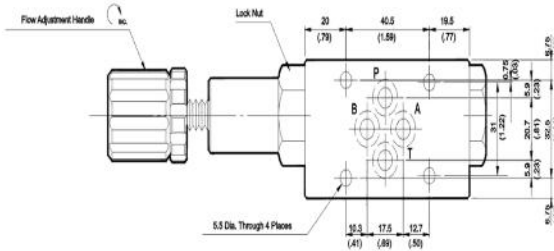
MOUNTING SURFACE: MR\*-01-CETOP3  
ISO 03-NFPAD03

## Valve Specifications & Attachment

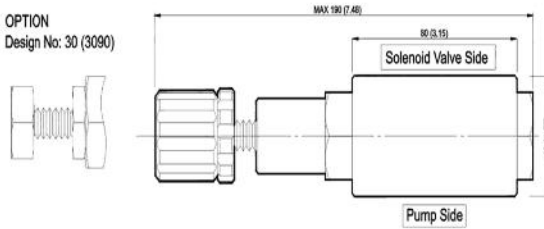
Flow Rating	50 lpm (13.2 gpm)
Max. Pressure	250 bar (3600 psi)
Weight kg.(lbs.)	1.1 (2.4)
CODE:20	M5 X85LgX4pcs
CODE:2090	10-24UNCX3-1/4"LgX4pcs
Mounting Surface O-Ring P9 x 4 pc	



SYMBOL



OPTION  
Design No: 30 (3090)



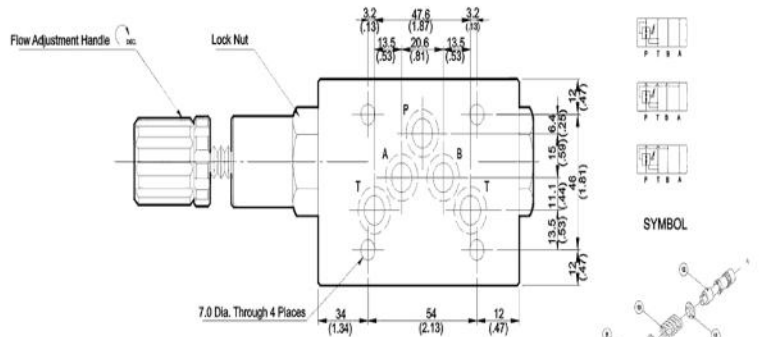
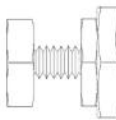
# MR\* -03 Reducing Valves (Modular Type)

MOUNTING SURFACE: MR\*-03-CETOP5  
ISO 05-NFPAD05

## Valve Specifications & Attachment

Flow Rating	100 lpm (26.5 gpm)
Max. Pressure	250 bar (3600 psi)
Weight kg.(lbs.)	3.8 (8.4)
CODE:20	M6 X90LgX4pcs
CODE:2090	1/4-20UNCX3-1/2LgX4pcs
Mounting Surface O-Ring P12 x 5 pc	

OPTION  
Design No: 30 (3090)

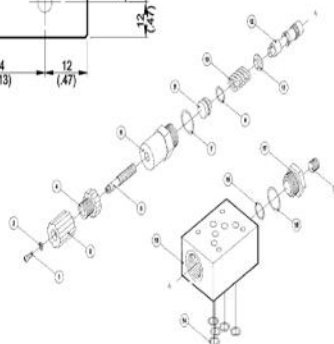
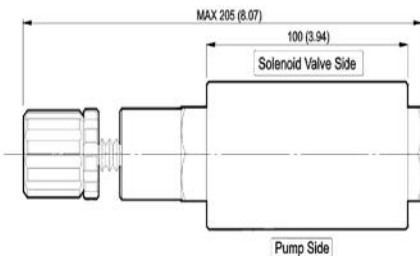


SYMBOL

SYMBOL

SYMBOL

SYMBOL

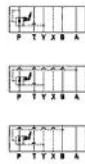
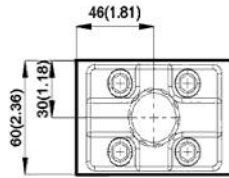


## MR\* -04 Reducing Valves(Modular Type)

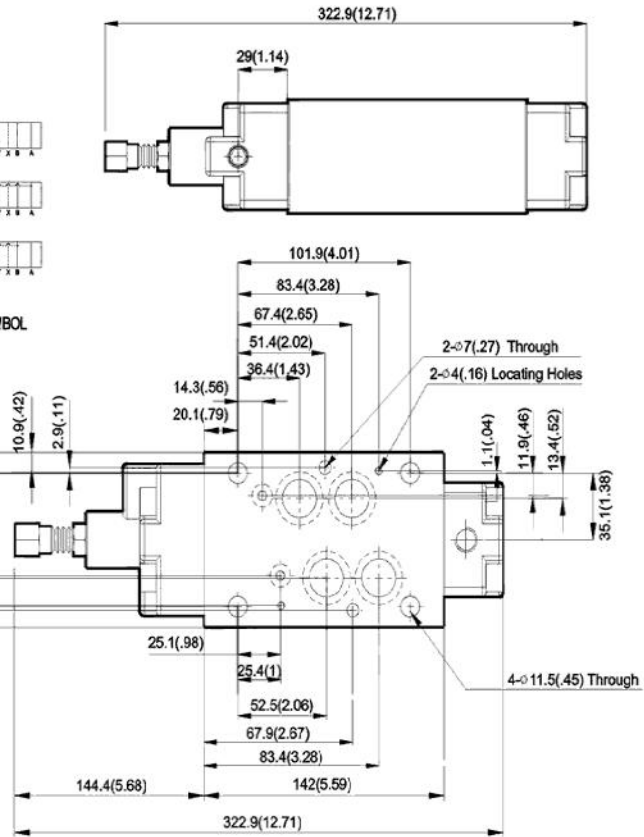
MOUNTING SURFACE:MR\*-04-CETOP7  
ISO 07-NFPAD07

### Valve Specifications & Attachment

Flow Rating	190 lpm (50.2 gpm)
Max. Pressure	250 bar (3600 psi)
Weight kg/(lbs.)	7.0 (15.4)
CODE:20	M6X125LgX2pcs M10X120LgX4pcs
CODE:2090	1/4-20UNCX4-7/8"LgX2pcs 3/8-16UNCX4-5/8"Lg X4pcs
Mounting Surface O-Ring P9 x 2 pc & P22A x 4 pcs	

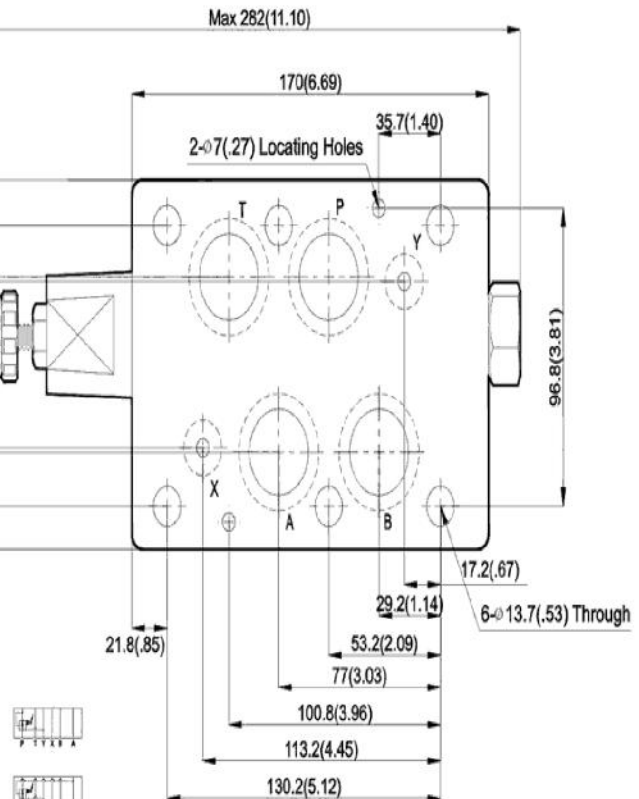
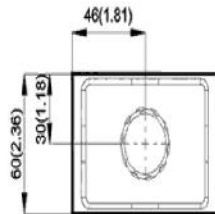


SYMBOL



## MR\* -06 Reducing Valves(Modular Type)

MOUNTING SURFACE:MR\*-06-CETOP8  
ISO 08-NFPAD08



### Valve Specifications & Attachment

Flow Rating	300 lpm (79.3 gpm)
Max. Pressure	250 bar (3600 psi)
Weight kg/(lbs.)	11.2 (24.6)
CODE:20	M12X140LgX6pcs
CODE:2090	1/2-13UNCX4-5/8"Lg X6pcs
Mounting Surface O-Ring P12 x 2 pc, P28 x 4 pcs	



SYMBOL

MRA-06  
MRB-06  
MRP-06

# MBW-01 Relief Valves

MOUNTING SURFACE: MB\*-01-CETOP3  
ISO 03-NFPAD03

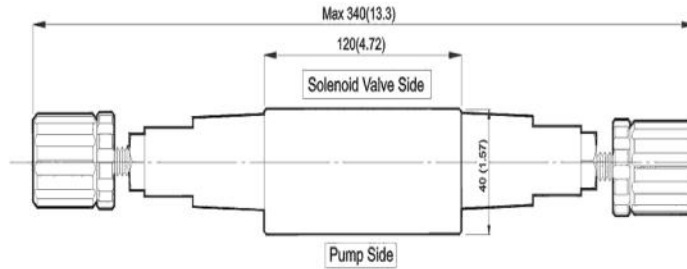
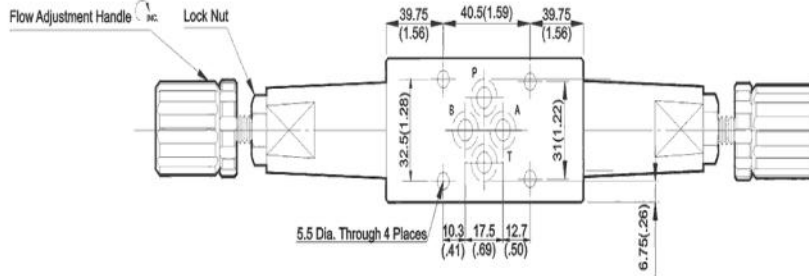
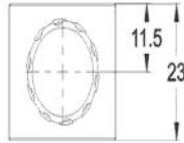
## Valve Specifications & Attachment

Flow Rating	50 lpm (13.2 gpm)
Max. Pressure	250 bar (3600 psi)
Weight kg.(lbs.)	1.1 (2.4)
CODE:20	M5 X95LgX4pcs
CODE:2090	10-24UNCX4"LgX4pcs
Mounting Surface O-Ring P9 x 2 pc	

OPTION  
Design No: 30 (3090)



SYMBOL



# MBW-03 Relief Valves

MOUNTING SURFACE: MB\*-03-CETOP5  
ISO 05-NFPAD05

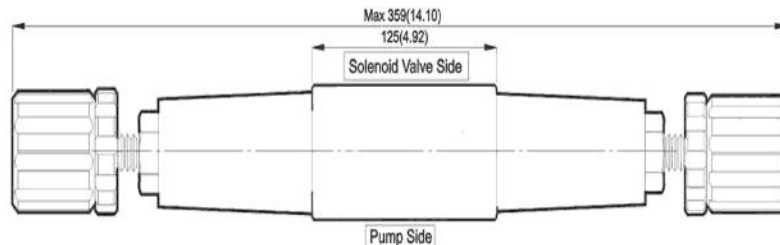
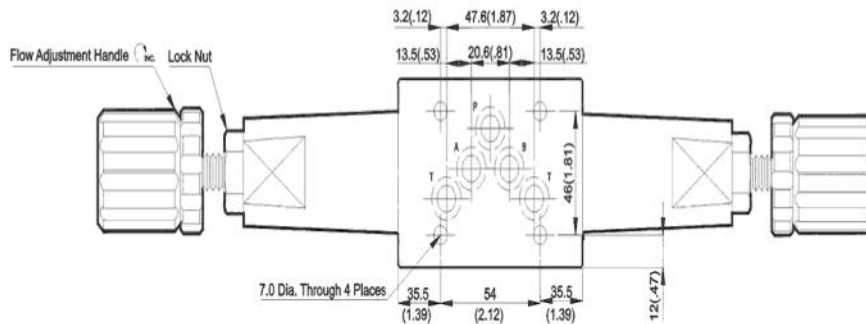
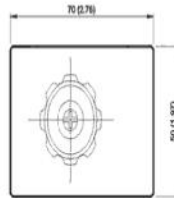
## Valve Specifications & Attachment

Flow Rating	100 lpm (26.5 gpm)
Max. Pressure	250 bar (3600 psi)
Weight kg.(lbs.)	3.5 (7.7)
CODE:20	M6 X90LgX4pcs
CODE:2090	1/4-20UNCX3-1/2LgX4pcs
Mounting Surface O-Ring P12 x 5 pc	

OPTION  
Design No: 30 (3090)



SYMBOL



## Ordering Code

MR	P	03	C	20	S
Series No	Control Line	Valve Size	Pressure Adj. Range	Design No	Option Kits
Reducing Modulare valves	P: P Port	(DSG-) 01(NFPA-D03)	B: 3~70 bar	20 DIn 912 bolts	None:With knob
		(NFPA-D05)		(North America)	Cap Screw
	B: B port	(DSHG-) 04 (NFPA-D07)	H: 70~210 bar		
		(DSHG-) 06 (NFPA-D06)			